

05/2026

# TDCA

WHAT'S ON



CINEMA, COACH TRIPS, EVENTS,  
ACTIVITIES AND MORE!

THE LINK & THE POINT



Charity No. 1198457

## **Welcome to the latest edition of Tadley & District Community Association (TDCA) guide to What's On.**

When I was asked to write this piece for the latest brochure, I was faced with a blank sheet of paper and I pondered what I was going to say.

I realised that in just a few weeks time, May 2026, I will have been a trustee of Tadley District Community Association (TDCA) for 30 years and it's an opportunity to reflect on our journey during this period.

My previous involvement with the community Centre before that time goes back to the mid 1960s where as a small toddler I attended the nursery in the old wartime building that stood on the current site and then more latterly through occasional visits when the centre was used as a polling station.

When The Community Centre was demolished and the new building was erected in 1994 nobody really anticipated the cost of running a building twice the size of the previous one and the demands to fill that space. Within two years of the new Centre opening, with one member of staff in the office and no volunteers, and the building resembling the Mary Celeste, it may come as no surprise that the Association was close to insolvency by the beginning of the new millennium.

Wind the clock forward to today and a lot has been achieved. The Association is in good financial shape, we have 3 members of staff working in the office and a volunteer base of 30 dedicated local residents helping out in many ways giving their time freely in a building that has a buzz about it everyday.

In recent years we have benefitted from capital grants that have seen the fabric of the building updated, which has included replacement of the conservatories in each corner of the building, new roof, new entrance lobby and porch. Much of this work was done to improve the insulation and reduce the running costs (along with fixing leaks!).

We have also been able to refurbish many parts of the building including the kitchen and toilet facilities.

Ten years ago we were able to construct The Point Youth Centre.

In the pages of this brochure we hope you will find something of interest. Some of the activities are provided by the Association itself through our staff and volunteers others through third parties hiring our facilities.

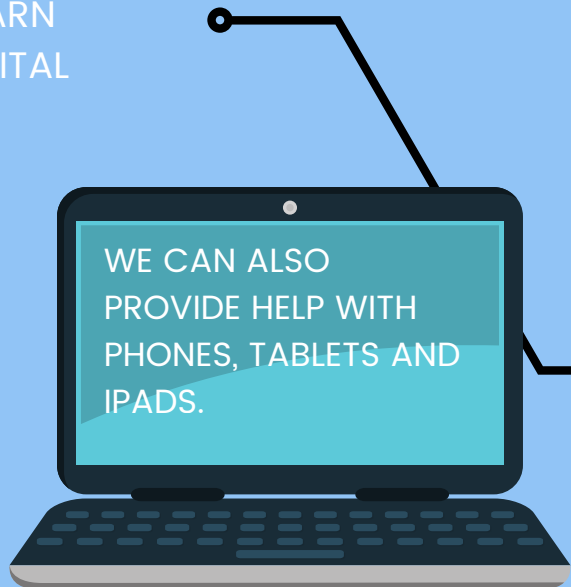
Adrian Noad  
Chair of Trustees

# SILVER SURFERS

## DIGITAL SKILLS FOR EVERYDAY LIFE

Struggling with your technology? Looking for support with online shopping, ordering prescriptions, sending e-consults, or anything else?

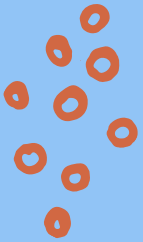
WE HAVE TUTORS ON HAND TO HELP YOU LEARN OR IMPROVE YOUR DIGITAL SKILLS, SUCH AS VIDEO CHATTING FAMILY MEMBERS, EMAILING, ACCESSING ONLINE SERVICES OR JUST SURFING THE WEB!



EVERY WEDNESDAY  
AT THE LINK, NEWCHURCH ROAD, TADLEY  
1PM TO 2.30PM  
NO NEED TO BOOK AND FREE TO JOIN



# Tete-a-Tete



**Every Friday**

**The Link, Newchurch Rd, Tadley**

**9.15am - 12.00pm**

Come along and meet new friends.  
Tea, coffee, juice, homemade cakes  
and more!



# COACH TRIPS & EVENTS



- 13/05 - Stourhead National Trust - £47**  
**21/05 - Paddington The Musical - SOLD OUT**  
**04/06 - Kinky Boots, London - SOLD OUT**  
**16/06 - Hinton Ampner - £48**  
**09/07 - Jesus Christ Superstar - SOLD OUT**  
**10/09 - Paddington The Musical - SOLD OUT**  
**11/09 - Beetlejuice The Musical £72**  
**08/10 - Les Miserables, London £90**  
**25/10 - Mamma Mia The Party - SOLD OUT**  
**04/12 - Bath Christmas Market - £30 SOLD OUT**  
**22/12 - Carols at The Royal Albert Hall - SOLD OUT**
- 2027**
- 21/01 - SIX The Musical, London £80**  
**21/04 - Billy Elliot The Musical, London £100**

Join our mailing list to keep up to date on the latest trips.

Limited tickets, early booking recommended.

To book call 0118 9814538

# Activity Schedule

## Monday

- \*Tadley Under Fives: 8am
  - Dance Fit: 9.15am
  - Home Educators: 9.45am
  - U3A Chess: 10am
  - WG Pilates: 12.15pm
  - Monday Club (Ambrose Allen): 1pm
  - WG Pilates (mobility issues): 1.30pm
  - U3A Bridge: 1.30pm
  - \*Breaking Barriers, Aero: 4pm
  - \*Breaking Barriers, Street: 4.30pm
  - \*Breaking Barriers, Glee Club: 5pm
  - \*Breaking Barriers, Drama: 5.30pm
  - \*Breaking Barriers, Acrobatics: 6pm
  - 4FitSake - Retro Dance: 6.30 pm
  - Tae Kwon Do: 7pm
  - Florence Dance: 7.15pm
- \*Term time only

## Tuesday

- \*Tadley Under Fives: 8am
  - Foot Clinic: 9am (01962 868545)
  - \*Home Educators: 9.45am
  - Tadley & Baughurst Art: 10.30am
  - U3A - Welsh: 2pm
  - Food Pantry: 2.30pm-5.15pm
  - BNI Hampshire: 4pm
  - Sport In Mind: 4.30pm
  - Chillz Youth Yr 6: 6pm
  - JC Dance (ages 7 to 11): 6.15pm
  - 4FitSake-Legs,Bums&Tums: 7pm
  - Chillz Youth Yr7+: 7.30pm
  - Men on Mats With Ali: 7.30pm
- \*Term time only

## Wednesday

- \*Tadley Under Fives: 8am
- Ali's Pilates: 9.15am
- Weight Watchers: 9.30am
- Food Pantry: 9.30am - 11.30am
- \*Cheeky Chimps: 9.30am
- Love to Move: 10.30am
- \*Baby Massage: 10.30am  
(Pre booking 0118 9814 538)
- Line Dancing - 11.15am
- Silver Surfers: 1pm
- Hope Harbour: 1pm (1<sup>st</sup> Wed)

- Afternoon Disco (3<sup>rd</sup> Wed): 1pm
  - Afternoon Quiz (2<sup>nd</sup> & 4<sup>th</sup> Wed): 2pm
  - U3A French: 2pm
  - \*AllStars preprimary ballet: 4.30pm
  - \*AllStars Junior Tap: 5pm
  - \*AllStars Primary Ballet: 5.30pm
  - VIBE :6pm (Ages 12 to 28yrs mild to moderate learning disabilities & Autism)
  - Loddon Lions (3<sup>rd</sup> Wed): 7.30pm
- \*Term time only

## Thursday

- \*Tadley Under Fives: 8am
- U3A Guitar: 9.45am
- U3A Speaker Meeting (3rd): 11am
- Tadley Carers Grp (Last Thur): 11am
- Civil Service Ret. Fellowsp. (1st): 1pm
- Hope Harbour: 1pm (3<sup>rd</sup> of month)
- Wendy Gill Pilates: 1.15pm
- Afternoon Media Club (2nd ): 2pm
- MFMartial Arts-MightyMatts: 5.15pm
- Ali's Pilates: 6pm
- MF Martial Arts (family 7+): 6.15pm
- 4FitSake: 7pm

\*Term time only

## Friday

- \*Tadley Under Fives: 8am
- WG Pilates: 9am
- Ali's Pilates Lift & Lean: 9am
- Tete-a-tete Coffee Morning: 9.15am
- \*Soft Play (wks 2&4): 9.30am
- Creative Crafts: 9.30am (every other)
- Ali's Pilates: 9.45am
- \*Tadley Tots (1st & 5th Fri):9.30am
- Messy Monkeys (3<sup>rd</sup> Fri): 9.30am
- Short Mat Bowls: 1.45pm
- U3A Poker (1st & 3rd): 2pm
- U3A Creative Writing (1st&3rd): 2pm
- U3A Committee Mtg (2nd Fri): 2pm
- Ali's Trigger Point (monthly): 6pm
- Tadley Gaming Club: 6pm
- South Berks Band: 7.30pm
- National Blood Donation - Various Times (0300 123 23 23 to book)

\*Term time only

## Saturday

- \*Little Kickers, Little Kicks: 8.35am
- \*Little Kickers, Jnr K'rs:9.25am
- \*Little Kickers, Mighty K'rs: 10.15am
- \*Little Kickers, Mega K'rs: 11.15am
- Cinema (First Saturday) 7pm
- C & D Country Dances 7pm (4<sup>th</sup> Sat)

\*Term time only

## Sunday

- Community Church: 10.30am
- U3A Sunday Plus: 2pm (2nd & 4th)

**Eye Screening and Health Visiting by appointment.**

# Tadley Community Cinema



## Upcoming Movies

**Cinema, First Saturday of the month at 7pm**

**2nd May - The Choral**

**6<sup>th</sup> June - H is for Hawk**

**4th July - Wuthering Heights**

## Thursday Media Club

**Second Thursday of the month at 2pm**

**September to April**

**Members £5.50, Non Members £6.50**  
**Refreshments served during the interval**

**Booking online**  
**[www.tadleycommunitycentre.org.uk](http://www.tadleycommunitycentre.org.uk)**  
**or at The Link reception**



# Afternoons at The Link



## Afternoon Disco

**Ronnie's Route 66 – Afternoon Disco**

**Discos for anyone who loves dancing in the afternoon.  
Bring your own drinks and snacks and enjoy a great afternoon of  
music and dancing.**

**1:00pm – 4:30pm**

**£7 per person - Booking online**

**Come along, have fun and dance the afternoon away!**

## Over 50's Quiz Afternoon

**Music, trivia and plenty of fun!**

**Gather your friends and test your knowledge in a relaxed and  
friendly atmosphere.**

**2:00pm – 4:00pm**

**£3.50 per person**

**Maximum of 6 people per team**

**No booking necessary, just turn up!**



**Fun, Friends, Games, Music**

**Every Tuesday**

**Year 6: 6pm to 7.15pm**

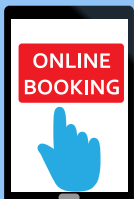
**Year 7-11: 7.30pm to 8.45pm**

**A safe space to hang out,  
make friends and have fun**

**Pool, Music, Air hockey,  
Table football & more**

**Year 6 Parties! Every 6 weeks!**

**Make new friends before secondary school!**



**0118 9814538**

**[www.tadleycommunitycentre.org.uk](http://www.tadleycommunitycentre.org.uk)**

**The Link, Newchurch Road, Tadley, RG26 4HN**

**Charity No:1198457**

# THE VIBE

A fun and social space for young people aged 12 to 28, offering a relaxed and welcoming environment to hang out, make friends and enjoy a range of activities.

Games and challenges

Music and dancing

Creative activities

 Team games

Group activities and plenty of laughs

The Vibe is a friendly and inclusive club for young people aged 12 to 28 with learning disabilities and autism. We provide a supportive space where young people can build confidence, develop friendships, and feel comfortable being themselves.

We create opportunities for everyone to grow, have fun, and thrive.

Every Wednesday

6:00pm – 7:15pm

Book online: [www.tadleycommunitycentre.org.uk](http://www.tadleycommunitycentre.org.uk)



0118 9814538

[www.tadleycommunitycentre.org.uk](http://www.tadleycommunitycentre.org.uk)

The Link, Newchurch Road, Tadley, RG26 4HN

Charity No:1198457

# TDCA PARTY PACKAGES

- Biff Baff Dash Assault Course £180
- Biff Baff Dash And \*Nibbles £280
- Bouncy Castle (15ft x 15ft) £140
- Bouncy Castle And \*Nibbles £240
- Toddler Chuckle Zone £170
- Toddler Chuckle Zone And \*Nibbles £270
- Toddler Chuckle Zone & Bouncy Castle £225
- Toddler Chuckle Zone & Bouncy Castle And \*Nibbles £325
- Soft Play Party £180
- SEN Party £180
- Cinema Party £180 (movie, hot dogs, sweets for 20 children)
- Party at The Point £110 (inc. use of table tennis, pool & air hockey)
- Disco at The Point £170 (inc. speaker and lights)
- Hall Only Party at The Link £70

\*Nibbles: for 20 children (includes sandwiches, veggie sticks, crisps etc).



**All parties include 4 hours hall hire (excluding cinema party)  
and use of the kitchen (includes setup/pack away time)**

Please let us know if you would like to use, our reusable party kit (30 bowls, plates, cups, knives, forks and spoons, along with 2 jugs) at no additional cost.

# 0-5 CHILDRENS GROUPS



## **Monday**

Bumbles, Tiny Tunes & Tales 9.30am 0 to Walkers  
Bumbles, Tiny Tunes & Tales 10.30am Walkers to 5yrs  
Mini Star Makers Cooking 1.30pm to 3pm (0-5 yrs)

## **Wednesday**

Cheeky Chimps 9.30 - 11.00 (0-5 yrs)  
Baby massage 11.00am to 12.30pm  
Phone 0118 9814538 for details

## **Friday**

Tadley Tots (Week 1 & 5) 9.30am-11.00am (0 - 5 yrs)  
Soft play (Week 2 & 4) 9.30am-11.30am (Birth - 2.5Yrs)  
Messy Monkeys (Week 1) 9.30am - 11am (0-5 yrs)

**Our baby weighing scales are available at our  
Wednesday and Friday sessions for you to use.**

**Our Children's Toy Library is available at all of our 0-5 sessions,  
giving little ones the chance to explore a variety of toys, while they  
play and learn. Toys, games and puzzles to hire from as little as 50p  
for 4 weeks!**

Book online through the TDCA website 'activities'  
[www.tadleycommunitycentre.org.uk](http://www.tadleycommunitycentre.org.uk)

# TADLEY COMMUNITY FOOD PANTRY

**TUESDAYS 2.30PM - 5.15PM**  
**WEDNESDAYS 9.30AM -11.30AM**  
(LAST ENTRY 5MINS BEFORE)

The Food Pantry is a self-referral service, open to anyone experiencing financial challenges, such as a low income, financial difficulties, or delayed income (the list is not exhaustive). You can use the pantry as needed, weekly, monthly, or even just once a year. Members can access the pantry a maximum of once a week, making a contribution of £5 per visit for up to 10 items.

If you would like to support our Community Pantry, donations are always greatly appreciated.

You can drop off food donations at:

The Link, Newchurch Road or Miles & Daughters, Baughurst.  
Your donations help support local families and individuals who may need a little extra help.

Every contribution, big or small, makes a real difference to our community.

Thank you for your kindness and support.



Charity No:1198457

COFFEE AND COMFORT

# HOPE HARBOUR



1<sup>ST</sup> WEDNESDAY & 3<sup>RD</sup> THURSDAY  
OF THE MONTH, AT THE LINK,  
TADLEY  
1PM TO 3PM

A SPACE FOR THOSE WHO ARE GRIEVING  
TO COME TOGETHER, CONNECT AND  
SUPPORT ONE ANOTHER.



TDCA, THE LINK, NEWCHURCH ROAD, TADLEY, RG26 4HN

[WWW.TADLEYCOMMUNITYCENTRE.ORG.UK](http://WWW.TADLEYCOMMUNITYCENTRE.ORG.UK)

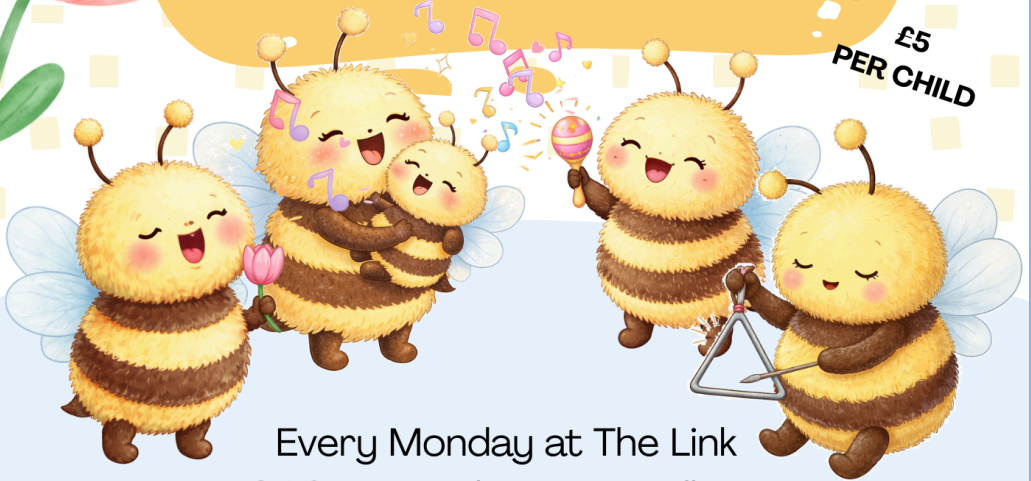
CHARITY NO: 1198457

# BUMBLES TINY TUNES & TALES MUSIC, SINGING & FUN



Sing-Along Songs | Musical Games |  
Storytime | Rhythm & Movement | Fun  
Instruments | Parent & Child Bonding!

£5  
PER CHILD



Every Monday at The Link  
9.30am Newborn to Walkers  
10.30am Walkers to 5 years  
Booking online through the website  
[www.tadleycommunitycentre.org.uk](http://www.tadleycommunitycentre.org.uk)

**0118 9814538**

Tadley & District Community Association  
Newchurch Road, Tadley, RG26 4HN  
Charity No: 1198457

# CREATIVE CRAFTS

Friday 22<sup>nd</sup> May 2026  
9.30am to 12.30pm  
@The Link, Tadley, RG26 4HN

Create a charming handmade gnome to keep for yourself or give as a thoughtful gift. No experience needed—just come along and enjoy! All materials included.

Every other Friday morning, contact The Link for more information

0118 9814538 CHARITY NO: 1198457  
WWW.TADLEYCOMMUNITYCENTRE.ORG.UK The Link, Newchurch Road, Tadley, RG26 4HN

# TADLEY GAMES CLUB

£5 ADHOC £2.50 MEMBERS

TRENCH + CRUSADE+ FROM AGE 12+ DUNGEONS & DRAGONS

FRIDAYS FROM 6PM TO 10PM  
THE LINK, NEWCHURCH RD, TADLEY, RG26 4HN  
WWW.TADLEYCOMMUNITYCENTRE.ORG.UK

Warhammer

Tadley & District Community Association  
Newchurch Road, Tadley, RG26 4HN  
Charity No: 1198457

# BABY & CHILDREN'S

TADLEY & DISTRICT COMMUNITY ASSOCIATION

## NEARLY NEW MARKET

Great bargains for growing families at a fraction of the price!

**SATURDAY 20TH JUNE**  
10:30AM TO 12:30PM  
THE LINK RG26 4HN

BUY, SELL & SAVE!

ENTRY: £1 CHILDREN FREE

REFRESHMENTS AVAILABLE

CLOTHES 0-12 YEARS TOYS & BOOKS PRAMS, COTS & EQUIPMENT MATERNITY ITEMS GREAT PRICES BIG SAVINGS

WANT TO SELL? TABLES BOOKED AT THE LINK 0118 9814538

COME ALONG, GRAB A BARGAIN AND SUPPORT YOUR LOCAL COMMUNITY!

www.tadleycommunitycentre.org.uk 0118 9814538  
Tadley & District Community Association, Newchurch Road, Tadley, RG26 4HN. Charity No: 1198457

# CHRISTMAS MARKET

TADLEY & DISTRICT COMMUNITY ASSOCIATION

## SHOP LOCAL, SUPPORT LOCAL

A festive day out for the family!  
Great gifts, festive treats and plenty of Christmas cheer!

**SATURDAY 28TH NOVEMBER**  
10:00AM TO 1:00PM  
THE LINK RG26 4HN

MEET SANTA!

LOTS OF FESTIVE FUN FOR ALL AGES!

MEET SANTA! REFRESHMENTS CAKE & TREATS BACON ROLLS

LOCAL CRAFTS & GIFTS FESTIVE STALLS UNIQUE PRESENTS SUPPORT LOCAL BUSINESSES PERFECT FOR CHRISTMAS SHOPPING

WANT TO SELL? BOOK TABLES BY CALLING THE LINK ON 0118 9814538

COME ALONG, SUPPORT YOUR LOCAL COMMUNITY!

www.tadleycommunitycentre.org.uk 0118 9814538  
Tadley & District Community Association, Newchurch Road, Tadley, RG26 4HN. Charity No: 1198457

## Join our mailing list!

Be the first to find out what's going on in your community.

E: [admin@tadleycommunitycentre.org.uk](mailto:admin@tadleycommunitycentre.org.uk)

## Become a member of TDCA today!

Join for just £5 per year and enjoy discounts on trips and selected activities. Find out more and sign up using the link or contact us for further information.

## Got an idea?

**We've got the space!**  
**Whether you're running a class, hosting a meeting, or starting a new group, our versatile halls / rooms at The Link and The Point are ready for you.**  
**Comfortable, affordable, and right in your community.**

**Book your space today!**

**Call: 0118 9814538**

## Keep free advice and support in Tadley

We're here for local people when you need us most. We provide free, confidential and independent advice and support with some of life's most difficult challenges.

Help keep us in the community. Visit: [www.catadley.org/support-us](http://www.catadley.org/support-us)



## Directory of local services

Citizen's Advice Bureau: 0808 278 7987

### Dentists

Harrison Dental: 0118 334 5234

Tadley Dental: 0118 981 3849

Lee Dental: 0118 981 3304

### Doctors

Tadley Medical Partnership: 0118 9814166

### Funeral Directors

Miles & Daughters: 0118 2144860

Ashbrook: 0118 9821111

### Opticians

Leightons: 0118 981 2250

Optimum Vision: 0118 981 0267

### Schools

Tadley Community Primary School: 0118 9813805

Bishopswood Junior School: 0118 9812738

Bishopswood Infant School: 0118 9812836

Burnham Copse Primary School: 0118 9814498

The Hurst Secondary School: 0118 9817474

Swimming Pool: 0118 981 7818

Tadley Library: 0300 555 1387

Tadley Town Council: 0118 981 3360



# FOR ALL YOUR ROOFING NEEDS

**Flat Roofing Systems**

**Fascias, Soffits & Guttering**

**Tiled Roofs**

**Green Roofs**

**Roofing Repairs & Maintenance**

**We're here to help - talk to us today**

0118 970 0799 | [info@dsroofingtadley.co.uk](mailto:info@dsroofingtadley.co.uk) | [www.dsroofingtadley.co.uk](http://www.dsroofingtadley.co.uk)



**Checkatrade.com**



**EXCEPTIONAL REPUTATION | ESTABLISHED 2009**



Established in 2009, D&S Roofing Single Ply Contractors Ltd has a long standing history of providing comprehensive roofing services around the country. We have an exceptional reputation and over 15 years' experience utilising many different roofing systems including; Sarna, Bauder, SIG, Alwitra, Spectra, Protan and many more.